



SHREE ASHTECH LIMITED

“Sustainable Solutions That Move You Forward.”



www.shreelog.com

Info@shreelog.com





SAL

Shree Ashtech Ltd.

“Driven by trust. Powered by performance.”



MEET THE LEADERS BEHIND SHREE ASHTECH

“It takes the right team to deliver the right results.”

At **Shree Ashtech**, our strength lies in the people who lead, innovate, and execute every day.



KASHMIR SINGH

Founder & Chairman

The visionary who laid the foundation of Shree Ashtech with a mission to power industries through reliable logistics and supply chain excellence.



AMITABH TIWARI

Director – Maintenance & Procurement

Leading asset management, vehicle performance, and critical procurement to keep our fleet running at its best.



YOGESH TIWARI

Director – Fleet & Operations

Managing fleet logistics, ensuring timely dispatches, and maintaining operational discipline across all regions.



LALIT TIWARI

Director – Marketing & Operations

Driving client relationships, marketing strategy, and day-to-day operations to strengthen our market presence.



SUMIT SINGH

Chief Executive Officer

Steering the organization with leadership, vision, and a commitment to operational excellence and client success.



EMPOWERING INDIA'S INFRASTRUCTURE, ONE DELIVERY AT A TIME

From cement to fly ash, from mines to megaprojects — Shree Ashtech ensures that materials arrive where they're needed, when they're needed. Our streamlined operations, tech-enabled logistics, and commitment to safety make us a trusted partner for leading brands across the nation.



ABOUT US

Who Are We?

Shree Ashtech was founded in 2004 with a mission to become the leading partner in Fly Ash supply and logistics across India. Starting as Shree Ashtech Enterprises, our journey of dedication and growth transformed us into a trusted name, now recognized simply as Shree Ashtech.

We are committed to helping India's infrastructure and manufacturing sectors achieve sustainability by delivering high-quality Fly Ash for cement, RMC, highways, AAC blocks, ACC roofing sheets, and NHAI projects.

Our Business

At Shree Ashtech, **Fly Ash** is at the heart of what we do. We ensure seamless movement of Fly Ash from major thermal power plants like **APCPL/CLP Jharli, NTPC Dadri, PTPS Panipat, and RGTPP Hisar**. We proudly serve a wide range of industries including cement plants, **NHAI highway contractors, RMC manufacturers, AAC block producers, and ACC roofing sheet companies**. In addition to Fly Ash, we also facilitate imported coal and pet coke supply for clients across India and Nepal, operating through major ports like Kandla, Mundra, and Navlakhi. Our logistics operations extend around key **refineries including Reliance Industries, Nyra Energy (formerly Essar Oil), and IOCL Panipat**, ensuring smooth handling and transportation of bulk materials across regions. We are driven by a commitment to consistency, reliability, and customer satisfaction, ensuring seamless bulk material logistics for projects that power India's progress.

HOW WE WORK

1 Strategic Planning & Fleet Allocation

Our process begins with a deep understanding of the client's requirements — type of material, destination, urgency, and safety protocols. Using this data, we allocate the most suitable vehicle from our fleet, ensuring optimal load capacity, fuel efficiency, and delivery timelines. Each trip is planned to minimize downtime and maximize reliability.

2 From Process to Proof—Automated on WhatsApp

We simplify your delivery experience with our digital delivery management platform, giving you real-time order visibility and instant digital proof of delivery—right on WhatsApp. From order placement to final delivery, you can track status live, receive automated WhatsApp updates, and access digital delivery receipts anytime. This paperless, transparent process reduces errors, eliminates manual follow-ups, and keeps you informed at every step.

3 Timely Delivery with Performance Assurance

Our reputation is built on consistent, on-time deliveries. Every trip is tracked until completion, with digital proof of delivery and documented performance metrics. We take accountability seriously — analyzing trip data, driver behavior, and customer feedback to improve efficiency and maintain high service standards.

OUR WORKSPACES

Our operations are supported by a strong presence across key industrial and logistics hubs in India.

HEAD OFFICE

Located in **Faridabad** (NCR – Delhi), our central team oversees all major planning, dispatch, and coordination functions.

BRANCH OFFICES

We maintain regional offices in **Panipat, Jharli, Vadodara, Jamnagar, and Kandla**, allowing us to maintain proximity to critical transport corridors and customer sites.

STRATEGIC LOCATIONS

These offices are positioned near major ports, refineries, and industrial zones, enabling us to manage large volumes with agility and precision, supporting the monthly movement of over 125,000 MT of materials across India.



POWERING PROJECTS WITH ASH+ & PREMIUM COAL SOLUTIONS

ASH+™ – ADVANCED CLASSIFIED FLY ASH

Engineered for Superior Strength

Our newly launched product, ASH+™, is a specially processed fly ash designed for high-performance structural concrete applications. It is trusted globally for enhancing the life and durability of concrete structures.

ASH+™ – The Smarter Choice for Stronger Structures

- Increases Structural Life: Improves strength, reduces permeability, and extends durability.
- Custom Grading: Available in multiple grades, tailored to suit specific client and project requirements.
- Cement Replacement: Ideal for partial cement substitute in diverse concrete applications.

Efficient Packing & Delivery Options

- Packaging: Available in 50 kg HDPE bags, jumbo bags, or bulk supply in 28–40 MT fly ash bulkers.
- On-Demand Dispatch: Delivered via our Real-Time Tech enabled fleet.
- Always Ready: Higher Bulker capacity to match project timelines and volume.



COAL - RELIABLE FUEL SOLUTIONS FOR INDUSTRY

Your Trusted Partner in Industrial Fuel Transport

Shree Ashtech is a trusted logistics partner to IOCL, handling domestic and cross-border (Nepal) coal and pet coke transportation for cement industries.

Our Coal Portfolio

We offer four types of coal to suit varying industrial needs:

1. **INDONESIAN STEAM COAL**

- Widely used in small and medium industries.
- Grades: 3200–5300 GAR.



2. **PETCOKE (PETROLEUM COKE)**

- Sourced from RIL & ESSAR (Jamnagar refinery).



3. **SCREENED INDONESIAN COAL**

- Sizes: 0–6 mm, 6–20 mm, 10–20 mm
- Grades: 4200–5000 GAR.



Highlights & Achievements

- Pioneers in IOCL Transport: First transporters for pet coke from IOCL Panipat & IOCL Koyli.
- Award-Winning Service: Recognized as "Excellent Performing Vendor 2015" by Ultratech Kotputli.
- We have installed our own state of art "Air classification based flyash processing unit" at Jharli(Jhajjar) to produce flyash as per BIS-3812 Grade-1.
- We are the only nominated Supplier of flyash approved by NPCIL (Nuclear Power Corporation Ltd for their 2700 MW upcoming Nuclear based Power Plant In Haryana.

TRUSTED BY INDUSTRY LEADERS ACROSS INDIA



Ahluwalia Contracts
(India) Limited



DMRC



J. Kumar



CERTIFICATES

SHREE CEMENT LTD.
BANDRU NAGAR, POST BOX 33, BEANWAR 305 W1, RAJASTHAN, INDIA

TO WHOMSOEVER IT MAY CONCERN

This is to certify that Shri Lalit Tiwari of M/s. Shree Ashtech Enterprises is our authorised transporter for transporting Patecke from Raliance, Jamnagar and IOC, Panipat to our plant located at Beaswar/Ras since last 3 years.

We are satisfied with their services.

For SHREE CEMENT LIMITED

K. C. GANDHI
VICE PRESIDENT (Material)

5th September 2008

दिल्ली मेट्रो रेल कॉर्पोरेशन लिमिटेड
DELHI METRO RAIL CORPORATION LTD.
(भारत सरकार एवं दिल्ली सरकार का संयुक्त उपक्रम)
(JOINT VENTURE OF GOVERNMENT OF INDIA AND GOVT. OF DELHI)
(OFFICE OF PROJECT DIRECTOR/JAIPUR)

CIN: U74899 DL 1995 GOI 068150 Tel: 0141-2822763

DMRC/PIE/VI/CG-22/Sub-Contract/4/15 Date: 23.03.2024

To,
M/s AFCONS INFRASTRUCTURE LIMITED
Jaipur Metro Phase 1C
Ground Floor, RamKripa Complex, 350,
Himmat Nagar, Gopabaura,
Tonk Road, Jaipur-302018

Sub: Contract ICB No. JPIEW/IC/Underground/03- Regarding NOC for use of M/s Shree Ashtech Pvt. Ltd as an alternate source to supply fly ash.

Ref: 1. Your Letter AFC/419/JMRC-ICUG/2023/21 dated 10.01.2024
2. DMRC letter dated DMRC/PIE/VI/CG-22/sub contract/3/10 dated 30.01.2024
3. Your Letter AFC/419/JMRC-ICUG/2023/169 dated 02.02.2024
4. DMRC mail dated 04.02.2024
5. Your Letter AFC/419/JMRC-ICUG/2023/252 dated 08.03.2024
6. Third party test report submitted on 18.03.2024

Dear Sir,
With above referred letters, you have proposed M/s Shree Ashtech Pvt Ltd for supply of fly ash for the above project. Joint sampling was done and sample was sent to third party testing lab to ascertain the suitability of product. Test reports are reviewed and complies with the IS 3612: Part 1

In the regard, DMRC has no objection to use M/s Shree Ashtech Pvt Ltd for fly ash subject to the condition of meeting all the technical requirement prior to application at site.

Please note that No objection is issued on the condition that:

- Completeness of documents submitted of M/s Shree Ashtech Pvt. Ltd shall be the responsibility of M/s Afcons.
- If Performance of the product is found not satisfactory during the project, approval shall be revoked.

Thanking you,

Yours sincerely
(Dharmendra Kumar)
CREO/DMRC/Jaipur

JAIPUR OFFICE : A-112, First Floor, Admin Building, JMRC Metro Depot, Bhriqur Pathi, Mansarovar Jaipur - 302020
CORPORATE OFFICE : Metro Bhawan, Fire Brigade Lane, Barakhamba Road, New Delhi - 110001

नूक्लियर पावर कॉर्पोरेशन ऑफ इंडिया लिमिटेड
Nuclear Power Corporation of India Limited
(भारत सरकार का एक अंग) (An Eng. of India Government)
नोकरा हाईवॉय एंड थर्मल पावर प्रोजेक्ट
Gorakhpur Haridwar Aam Vajpayi Parvatiyama
आम वजयि, एम. वी. पार्क, नोकरा हाईवॉय-12047
VIBRA P.O. CORPORA, 106, BROADWAY, NEW DELHI, INDIA-110047
प्रेसिडेंट ऑफ कॉर्पोरेट अफेयर्स नो. 1401/0001/1995/001/0001/0001

रिक्वायर्ड फॉर Civil Group

No.:	NPCL/GH/VP/PE/CIVIL/2022/S/5176	28/11/2022
Sub:	Proposal for Source qualification report of Fly Ash sample from IGSTPP & JPL.	
Ref.:	1. GHAVP1&2-CIVIL-WO-78 Dated: 15.02.2019 2. TPL-14008/NPCL-GH/VP/2021 Dated: 28.08.2022	

सेवा में: **मैक्स एंडा प्रोसेसिंग लिमिटेड** कृपया ध्यान दें: श्री डी. के. सिंह
मार्टर ऑफिस, नो. 2, अ. वि. प. 1, 6.2 पर, दिल्ली

Dear Sir,
This is with reference to your proposal of Source qualification report of Fly Ash sample from IGSTPP & JPL. The Source qualification report of Fly Ash sample collected from Indira Gandhi Super Thermal Power project (AFCPL) is reviewed and found satisfactory except for particle retention of 45 sieve as per technical specification. Hence, same shall be required to process at classified process unit for main plant works (Currently classified of M/s Shree Ashtech Pvt. Ltd. is only approved. Hence, fly ash is to be supplied after processing in approved classifier only.

This is for your information and necessary action please.

Thanking you
Yours Faithfully
(D.K. Singh)
परिचालक, (विद्युत) File-MPCW-2A
श्री मास्टर सूया (एच. ई.)
श्री अजय शर्मा / सहायक प्रबन्धक
अनुसूचित इकाई: एम्प्लॉयर्स यू

ADITYA BIRLA
ADITYA / VIKRAM / KOTPUTLI CEMENT WORKS
Ultratech

VENDOR MEET - 2015
CERTIFICATE

This is to certify that performance of M/s SHREE ASH TECH ENTERPRISES has been rated as commendable at Aditya / Vikram / Kotputli Cement Works in the field of Stores & Spares Supply / Raw Materials Supply / Contract Execution / Transportation during the financial year 2014 - 2015.

VIMAL SONI Functional Head (F&C) Aditya Cement Works
MANJUNATHRA Functional Head (F&C) Vikram Cement Works
ANIL SONI Functional Head (F&C) Kotputli Cement Works

NUVOCO
Shopping a new world

CERTIFICATE OF APPRECIATION

M/s SHREE ASHTECH PVT. LTD.

In Recognition and Appreciation of Outstanding Contribution Towards Quality Service

We Value your Partnership !!!

Ashish Palod Chief Procurement Officer
Jaykumar Krishnaswamy Managing Director

Choose from our range of over 35 products:

Cement Products: **CONCRETO**, **DURAGUARD**, **NIRBAX**
Modern Building Materials: **ZERO M**
Ready-Mix Concrete Products: **Artitec**

URS CHAITANYA
URS Scott Wilson India Private Limited In JV With Chaitanya Project Consultancy (P) LTD.

Ref. No.: URSSW/HQ/ELA/ER-II PKG-I/Senipar/2021/132 Dated: 10.02.2022

To,
The Authorized Signatory
HG Infra Engineering Limited,
House No. 25, Basement Floor,
Panchsheel Estate, Pocket 11-A,
Sector-23, Rohini, Delhi-110085

Sub:
Development of 6 Lane Urban Exemption Road (UER-II) NH-134 M, Package-I (from NH-1 to Karakumhalsana Road, Km 00+700 to 15+000) in the state of Delhi - Source approval of Vendor M/s Shree Ashtech Pvt Ltd for procurement of UltraPozzol F (Ultrafine Mineral admixture), Ultrafine GGBS, Microsilica and Fly ash in works of UER-II, package-I-Reg.

Ref: EPC Contractor letter no. HQ/ELI/JPR/134/UR-II/AE/2021/184 dated 02.02.2022

Dear Sir,
With reference to your letter cited above, we have reviewed the submitted Vendor Credentials/profile of M/s Shree Ashtech Pvt Ltd for procurement of Ultra Pozzol F (Ultrafine Mineral admixture), Ultrafine GGBS, Micro-silica and FlyAsh-Grade-I (IS:3812) as per the requirements of M&RTE. It is noted provisionally.

3. Further, the above Vendor source approval may be withdrawn/ cancelled without any prior notice if the product materials are found to be defective/ unsuitable for use in concrete works.

Yours faithfully,
For URS Scott Wilson India Pvt. Ltd. In JV with CPCL
Rajan Meghwal
Team Leader

Copy To:
1. The Project Director, PU-Dwarka, NHAI, New Delhi - for kind information please.
2. Authority's Engineer- URS Scott Wilson India Pvt Ltd - for kind information please.

TATA Page 1 of 1

Date: 01-04-2025

To
Shree Ashtech Limited,
HOLDINGS BOARD COLONY,
Faridabad SECTOR-3,2025,
BALLABGARH Faridabad 121004
9696010504.

The details of project and work executed are as furnished below:

Name of Work: Supply of Flyash for GHVP work
Name of Main Client: Nuclear Power Corporation of India (NPCL)
Name of Contractor: M/s Shree Ashtech Limited

This is to certify that M/s Shree Ashtech Limited has been consistently providing Fly ash for the GHVP/ NPCL project in Haridwar, meeting all project requirements and performing satisfactorily.

Yours faithfully,
A. K. SHARMA
PROJECT DIRECTOR

M/s. Tata Projects Limited, Camp at NPCL-GHVP-02, Connaught Place Area, MIDC Park Road, VPO Connaught, Ballabgarh, Faridabad, Haryana 120001
Registration Office: National Highway 27 at 10/10/10, Panchsheel Road, Sector-16/16B, Gurgaon, Haryana
Phone: +91-9946424801, Fax: 60212515, e-mail: info@tataprojects.com, www.tataprojects.com

apco INFRA TECH PVT. LTD.
Date: 16.12.2024

Letter of Appreciation

M/s Shree Ashtech Private Limited
Sector 3, Faridabad - 121004
Haridwar
GST: 06AATCS1362812G

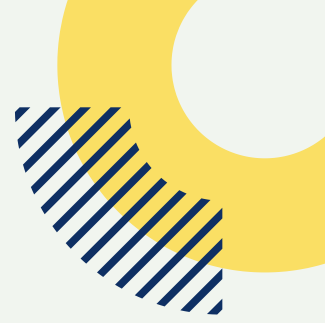
Apco Infra Pvt Ltd is proud to be associated with M/s Shree Ashtech Private Limited as valued vendor has successfully executed the supply of Dry Flyash in Bulkers on our following NHAI awarded Projects maintaining the quality of the product -

- 1) Delhi Vadodra Expressway Project PKG-I. (Completed)
- 2) Delhi Vadodra Expressway Project PKG-II. (Completed)
- 3) Jewar International Airport Link Road Project (Ongoing)

We wish that your company may continue to contribute more to supply of Dry Flyash to our different projects.

Thanks
Procurement Department
Apco InfraTech Pvt Ltd

Company Office: National Highway 27, Km. 10, Sector 16-B, Gurgaon, Haryana 122001 (Phone: +91-122-4442300, Fax: +91-122-4442300)
Project Office: 10/10/10, Panchsheel Road, Sector 16/16B, Gurgaon, Haryana 122001 (Phone: +91-122-4442300, Fax: +91-122-4442300, Email: info@apcoinfra.com, Website: www.apcoinfra.com)



SHREE ASHTECH LIMITED

Shree Ashtech Limited is a trusted name in bulk material logistics and supply chain solutions across India and beyond, and a reliable coal & petcoke supply network, We serve some of the nation's leading cement, power, and infrastructure industries. We combine experience, technology, and precision to deliver materials on time, every time — backed by real-time tracking, automated reporting, and customer-first service.

From India to Nepal, from refineries to ready-mix plants,

We move what builds industries.

Shree Ashtech Limited.

Driven by trust. Powered by performance.



CONTACT US:-



Shree House, 2025, HBC, Sec 3,
Faridabad, HR (121004)



“SAL”
Classifier unit- Village Jharli, Distt. Jhajjar



info@shreeelog.com



9313361750
9999010504